

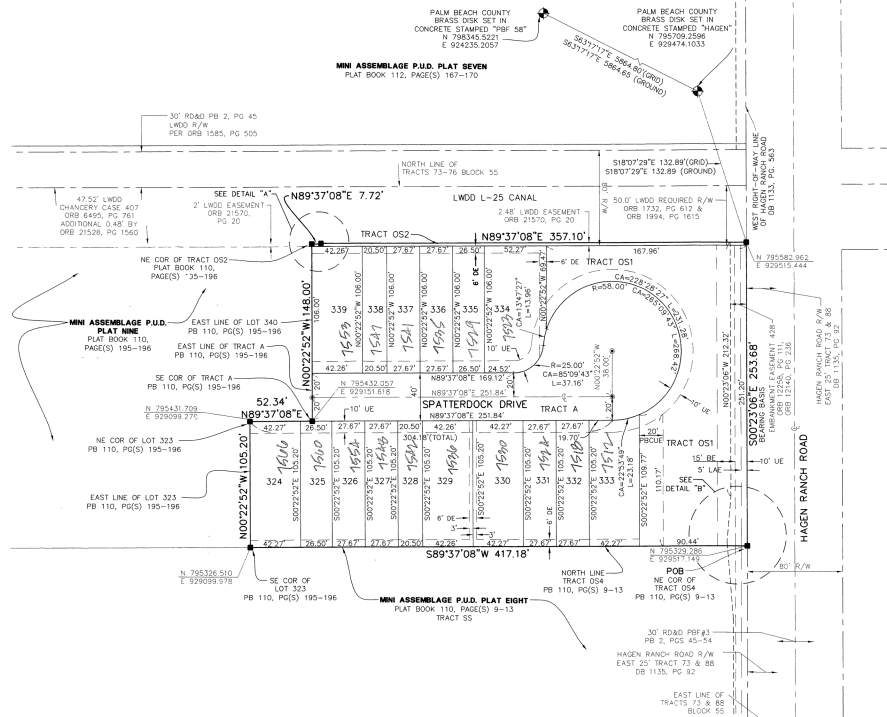
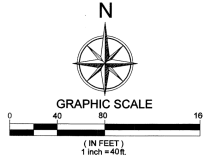
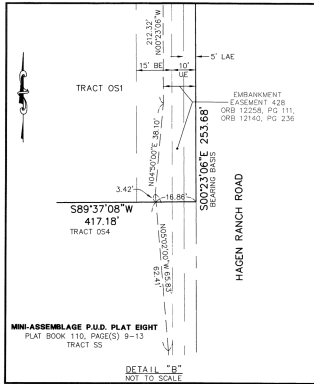
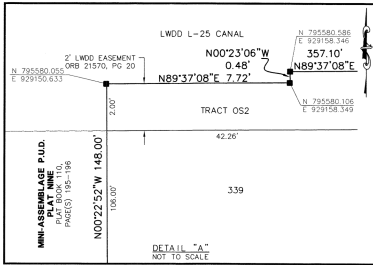
MINI ASSEMBLAGE P.U.D. PLAT FIVE

ALSO KNOWN AS GREYSTONE P.U.D.

BEING A REPLAT OF A PORTION OF TRACTS 73 AND 74, BLOCK 55, PALM BEACH FARMS COMPANY PLAT NO. 3, RECORDED IN PLAT BOOK 2, PAGES 45 THROUGH 54, PUBLIC RECORDS OF PALM BEACH COUNTY FLORIDA, BEING IN SECTION 28, TOWNSHIP 45 SOUTH, RANGE 42 EAST PALM BEACH COUNTY, STATE OF FLORIDA
MARCH 2012 SHEET 2 OF 2

This Instrument Prepared By
RONNIE L. FURNISS, P.S.M.
Certificate of Authorization No. LB 8791
MARCH 2012

Calvin, Giordano & Associates, Inc.
Engineers Surveyors Planners
666 Village Boulevard, Suite 340
West Palm Beach, Florida 33409
Phone: 561-664-6161 Fax: 561-664-6300



LEGEND:

- BE = BUFFER EASEMENT
- CA = CENTRAL (DELTA) ANGLE
- DB = DEED BOOK
- E = DRAINAGE EASEMENT
- LA = ARC LENGTH
- LAE = LIMITED ACCESS EASEMENT
- LD = LAKE WORTH DRAINAGE DISTRICT
- DRB = OFFICIAL RECORDS BOOK
- PB = PLAT BOOK
- PBCE = PALM BEACH COUNTY UTILITY EASEMENT
- PF# = PALM BEACH FARMS COMPANY PLAT NUMBER 3
- POB = POINT OF BEGINNING
- PRM = PERMANENT REFERENCE MONUMENT
- P.U.D. = PLANNED UNIT DEVELOPMENT
- PG(S) = PAGE(S)
- R = RADIUS
- R.O.D. = ROAD, DIKE AND DITCH RESERVATION
- R/W = RIGHT-OF-WAY
- UE = UTILITY EASEMENT
- CL = CENTERLINE
- SE = SET PERMANENT REFERENCE MONUMENT
- SET = SET PERMANENT REFERENCE MONUMENT WITH A 2" ALUMINUM PLATE, STAMPED "PRM LB 8791", UNLESS OTHERWISE NOTED
- * = PERMANENT CONTROL POINT (SET "PK" NAIL AND DISK LABELED "LB 8791")
- ⊕ = PALM BEACH COUNTY HORIZONTAL CONTROL

SURVEYOR'S NOTES

COORDINATES SHOWN ON THE GEODETIC CONTROL MEET OR EXCEED THE LOCAL ACCURACY REQUIREMENTS OF A 2 CENTIMETER GEODETIC CONTROL SURVEY.
COORDINATES SHOWN ARE GRID COORDINATES DATUM = NAD 83 (1989 ADJUSTMENT) AS READJUSTED BY PALM BEACH COUNTY IN 1998.
ZONE = FLORIDA EAST ZONE
LINEAR UNITS = U.S. SURVEY FEET
COORDINATE SYSTEM = 1983 STATE PLANE TRANSVERSE MERCATOR PROJECTION
ALL DISTANCES ARE GROUND
SCALE FACTOR = 1.00025882
PLAT BEARING = GRID BEARING